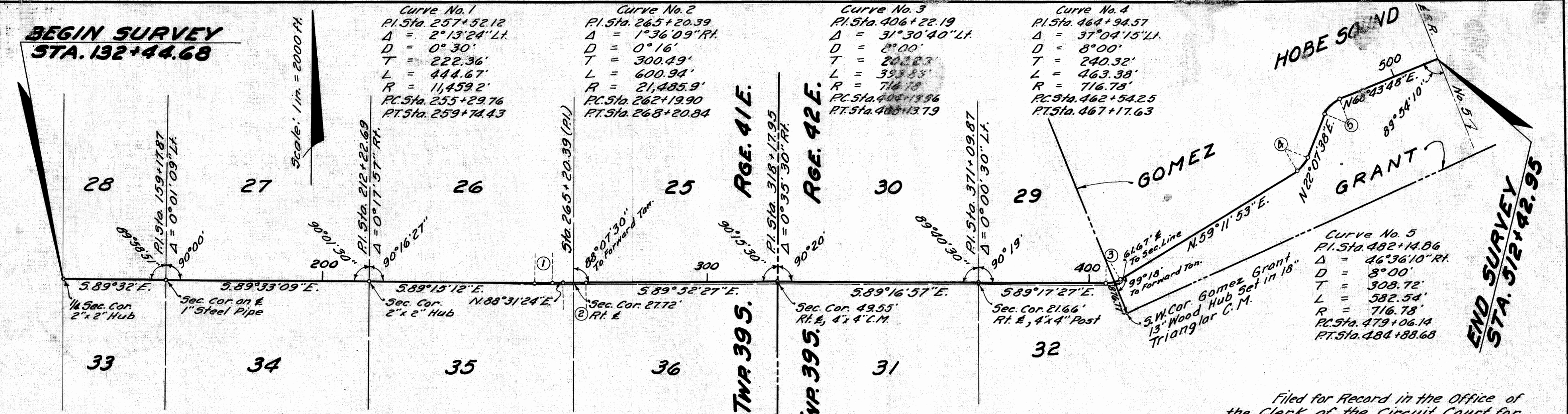


**BEGIN SURVEY
STA. 132+44.68**

**END SURVEY
STA. 512+42.95**



We, Alfred A. M^{rs} Kethan, as Chairman of the State Road Department of the State of Florida and R.M. Hartsfield, as Secretary of the State Road Department of the State of Florida, do hereby certify that this Map is the Official Map of Location and Survey of a portion of Section 8951, designated as a part of State Road 5-708 in Martin County, Florida: Said portion of Section 8951 extending from Southeast corner of Southwest 1/4 of Section 28, Township 39 South, Range 41 East, easterly and northerly to State State Road 5 at Hobe Sound.

Prepared and adopted by the State Road Department of the State of Florida under provisions of Section 341.47, Florida Statutes of 1941.

Alfred A. M^{rs} Kethan
Chairman State Road Department

R.M. Hartsfield
Secretary State Road Department

Approved: *[Signature]*
State Highway Engineer

Filed for Record in the Office of the Clerk of the Circuit Court for the County of Martin, State of Florida in Map Book 2 Page 82 on the 14th day of July A.D. 1952.

Dorothy Pierce
Clerk of the Circuit Court
Martin County, Florida

Date: May 28, 1952